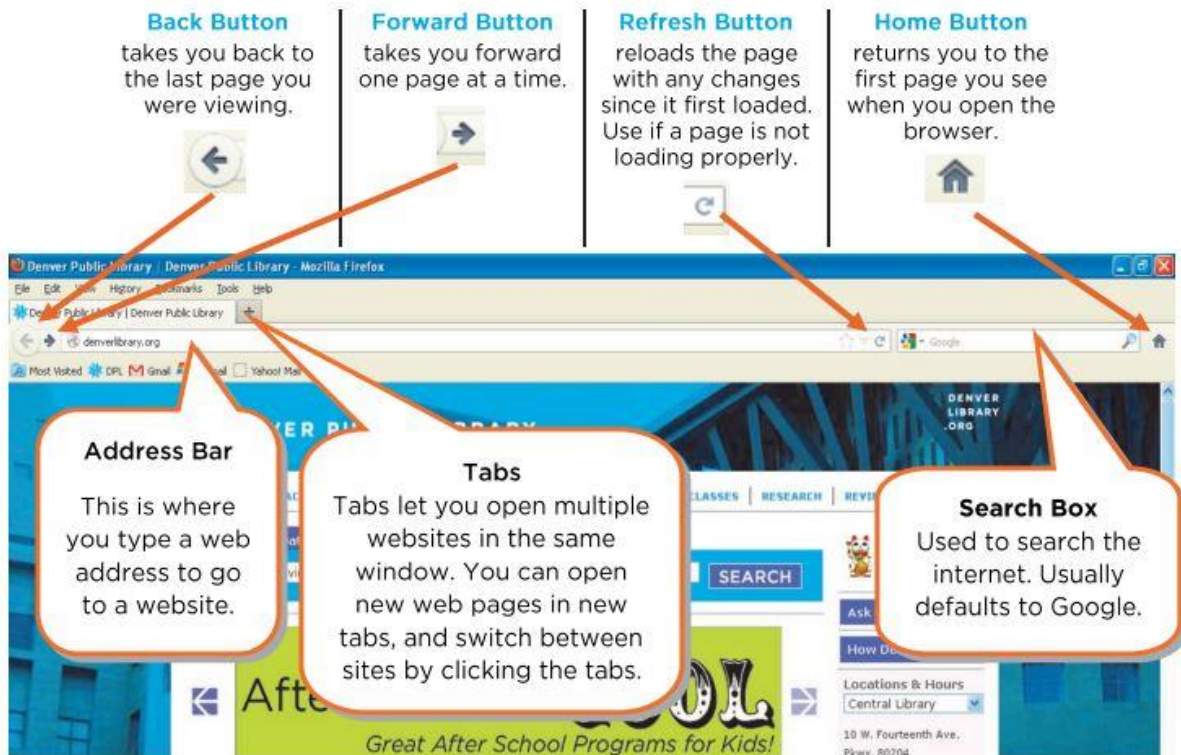


Internet Vocabulary

- **Internet/World Wide Web:** A global network of interconnected computers.
- **Browser:** A program used to view the Internet. (e) Internet Explorer or Google Chrome.
- **Website:** A group of connected pages on the Internet.
- **Web address/URL:** The unique name for a webpage, displayed in the browser's address bar.
- **Link:** An image or text that that can be clicked to go to another web page.
- **Search Engine:** A website that searches for information on the Web.

Navigating a Web Page

Anatomy of a Web Browser



Searching the Web

Search engines like Google allow you to search the Internet for web pages on a certain subject, using keywords. Type keywords in the search box, hit the enter key and you will get a list of web pages – your search results – that are related to those words.

How to read Google search results:

The image shows a Google search results page for the query "google". Several callouts are overlaid on the page to explain different components:

- Title/Link:** A callout pointing to the search result for "Google" with the URL "www.google.com/". The text says "Click here to go to the website".
- URL - the webpage's address:** A callout pointing to the "www.google.com/" link.
- Snippet - a description of the webpage:** A callout pointing to the text "Search the world's information, including webpages, images, videos and more. Google has many special features to help you find exactly what you're looking ...".
- Ads:** A callout pointing to an advertisement for "Make Google Your Homepage". The text says "Ads - these may be related to your search but they're usually trying to sell you something".

Email Information:

My new email address information:

Username (email address): _____

Password: _____

To sign in to your email account:

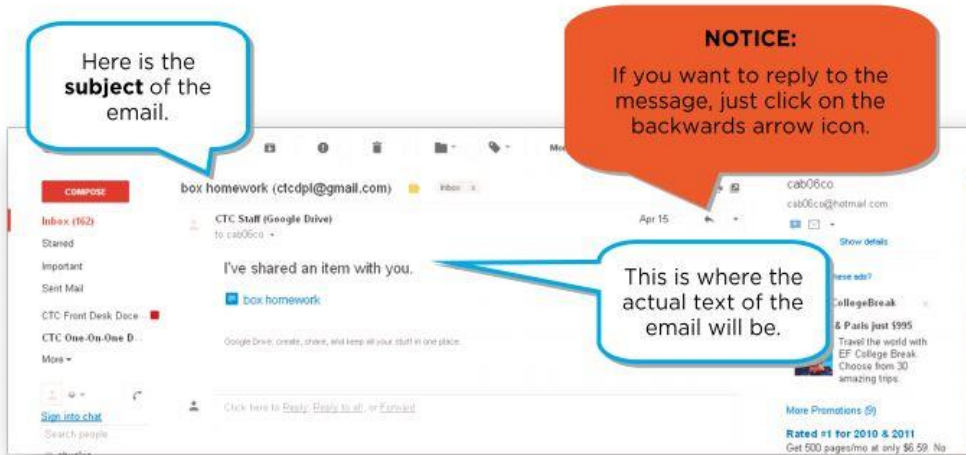
The image shows the Gmail sign-in page in a browser window. Four numbered callouts provide instructions:

- 1:** "Open up your web browser and type in **Gmail.com** into the address bar." (Points to the address bar)
- 2:** "Type in your email address here." (Points to the Email input field)
- 3:** "Type in your password here." (Points to the Password input field)
- 4:** "Click on **Sign In**." (Points to the Sign In button)

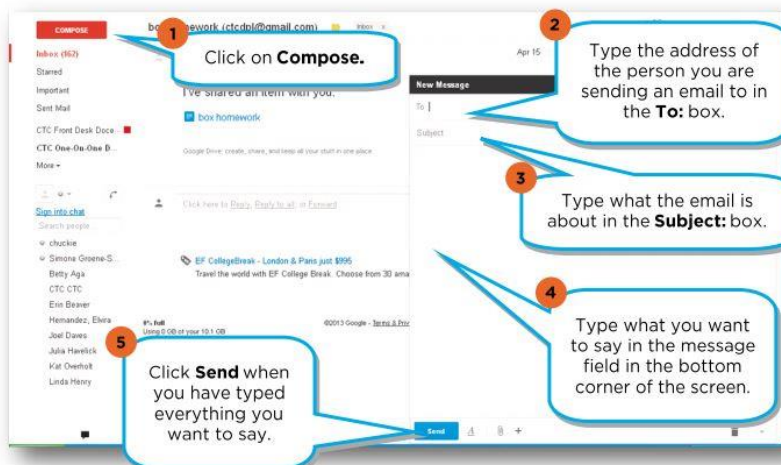
After you've signed in, here's how you read your email:



When you open a message, it will look like this:



Need to write an email?



This is how you delete emails:



Need more help?

- Be sure to sign up for another class at the Baldwin Borough Public Library.
- Check out a book from the library to learn more.
- Come to the library and practice on a library computer.
- Visit: <http://www.gcflearnfree.org/popular/internet101>. This page contains some review on the Internet.
- Visit: <http://www.gcflearnfree.org/popular/email101>. This page contains review about email.
- Call Pam at the Baldwin Borough Public Library and schedule a one-on-one appointment: 412-885-2255.